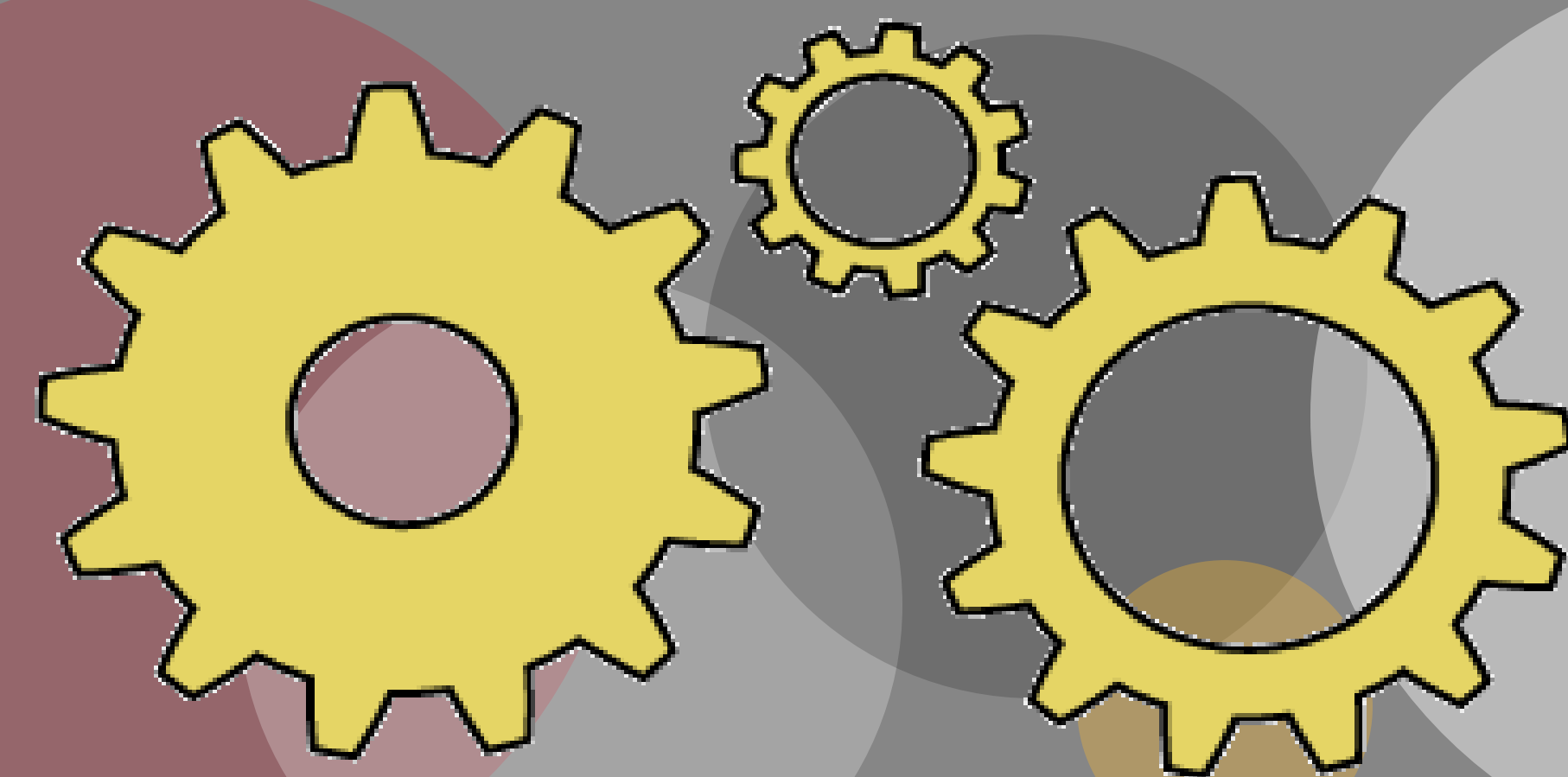


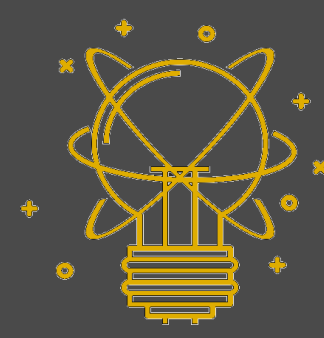
# SELF



## STUDENT EMPOWERED LEARNING FRAMEWORK

### T R A I T S

### S K I L L S



#### INNOVATION

Creating and adapting behavior that is fueled by curiosity.



#### CIVILITY

Valuing personal identity and beliefs while honoring those of others.



#### AGENCY

Acting independently with calculated purpose, courage, and power.



#### AGILITY

Learning from experience and adapting to new situations.



#### TENACITY

Persisting without exception.



#### INTEGRITY

Doing the right thing even when no one is watching.



#### KNOWLEDGE

Acquiring understanding through experience of learning.



#### COLLABORATION

Working effectively with others, assuming shared responsibility, and valuing individual contributions.



#### REFLECTION

Evaluating practices and experiences to gain awareness of thinking and learnings.



#### COMMUNICATION

Articulating thoughts and ideas through various means and listening effectively to decipher messages.



#### CONTRIBUTION

Enacting a set of intentional strategies designed to accomplish goals and contribute value.



#### LEADERSHIP

Accomplishing goals by building strong relationships, communicating effectively, and modeling expectations.



#### SOLUTION SEEKING

Asking significant questions that clarify needs and lead to desired objectives.



#### EMPOWERMENT

Taking charge of your own circumstance through trait and skill development, and by being personally vested in the results.

